



CHILL ROOM HIGH-SPEED DOOR



+ POSITIVE TEMPERATURE 0°
 ➔ OPTIMIZE TRAFFIC FLOW
 ⚡ SAVING ENERGY COSTS

- Specially designed for the agri-food industry, due to its anodized aluminium finished and the use of anticorrosive, washable and hygienic components. Its installation in chill rooms (temperature up to 3 °C) contributes to greater energy efficiency, by minimizing the opening time of the cold room (bigger energy savings when it is fitted behind a sliding door).
- This high-speed door facilitates the entrance and exit of vehicles and people from the cold rooms, by opening and closing much faster than the automatic sliding door, optimizing the traffic of goods, ensuring a better conservation of food and reducing maintenance costs.
- Door with great insulation, very useful in the access area to cold rooms, where there are no tempered antechambers, since it considerably reduces the condensation on the canvas, avoiding water on the canvas and on the floor.

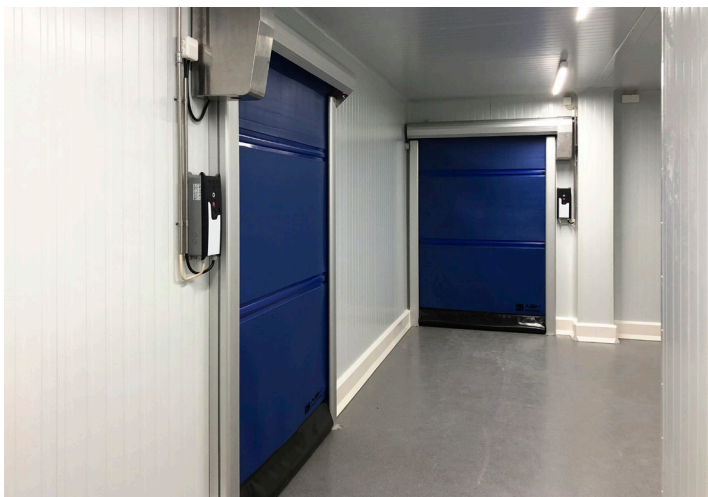
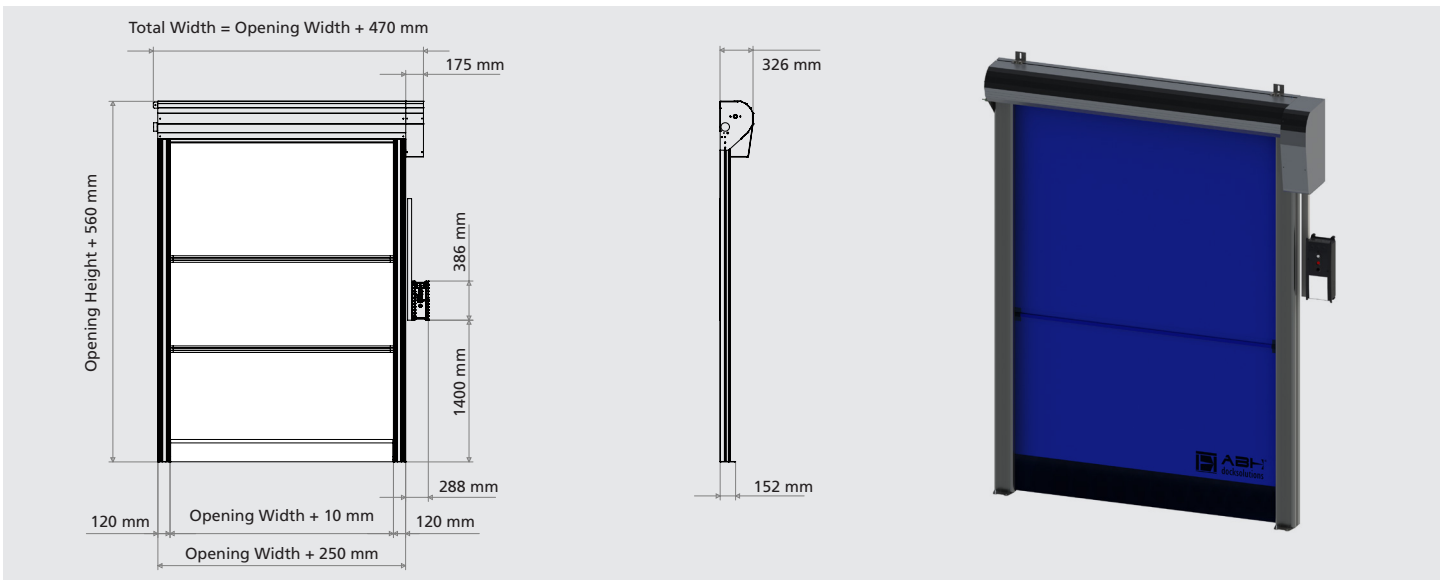




STRUCTURE

- Anodised extruded aluminium guides and self-supporting structure for quick installation on the panel or wall.
- Stainless steel lintel (except for doors $\leq 2200H$ that will be in anodized aluminium) and increased canvas closure to ensure a better seal.
- Moving parts to fix the lintel that allow to ensure a perfect assembly, even if the wall or the panel has irregularities.
- Aluminium shaft for rolled up the canvas, that slides over high-quality and anticorrosive bearings.
- Guides with reinforced sealing (with perimeter insulation), equipped with polyethylene slip pieces that limit the entry of dirt.
- Stainless steel fittings and hardware.

TECHNICAL SPECIFICATIONS & ASSEMBLY DRAWINGS



CANVAS

- Canvas made of highly resistant interwoven nylon PVC that prolongs the durability of the canvas.
- Treatment against flame propagation FR, self-extinguishing and U.V. treatment against solar degradation.
- Blue colour and without vision panels to avoid condensation.
- Flexible and resistant reinforcing bars in composite, which allow the canvas easily returns to its original position in case of impact.
- Black base completely flexible so that it does not get damaged in case of impact and that allows the door to be perfectly flush with the ground, even if the surface is irregular.

COLOUR



AZUL EUROPA

VOLTAGE STANDARD

1x230Vac-50/60 Hz

MOTORIZACION

MOTOR

- Gearmotor with high performance electro brake, operation THREE PHASE 230/400V-50Hz, with manual crank release in case of lack of electricity.
- Motor with IP65 standard that guarantees water and moisture tightness.
- Maintenance-free motor with low noise level and position control by absolute encoder.
- Motor cover included.

CONTROL PANEL

- Easily programmable control panel made with high quality material.
- Power supply for 24 Vdc accessories with built-in electricity stabilization.
- Adjustment to limit switch from the control panel. This does not have to be done from the motor, so lifting gear is not necessary for making the adjustment.
- IP65 control box to increase water and moisture tight.
- Opening/closing speed approx. 0.90 m/s

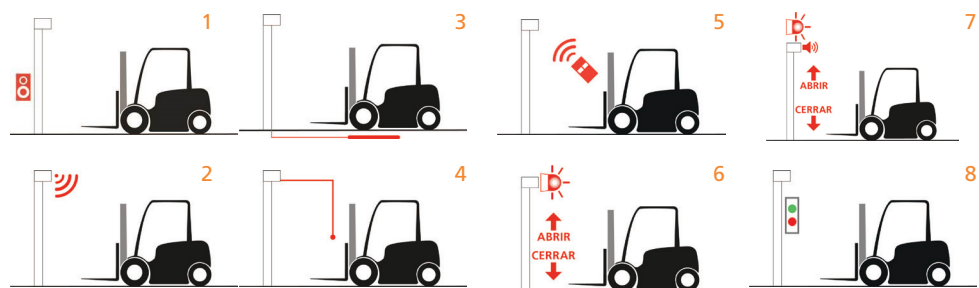
SAFETY

Certified with CE marking according to UNE-EN 13241-1: 2004 + A1: 2011, the door is always equipped with:

- Safety light curtain IP67 (2000H or 2500H in function of the height of the door) integrated in the guide, with hidden wiring, which guarantees the protection of the entire passage surface, minimizing the risk of impact.
- Interior bottom box IP67 with opening bottom and emergency stop, so the door can always be opened from both sides.

OPENING OPTIONS

1. Emergency bottom box.
2. Sensors.
3. Induction loop.
4. Pull cords.
5. Remote control.
6. Safety light.
7. Safety light with son.
8. Traffic light...





MULTIPLE DOOR OPTIONS AND LAYOUTS

- Opening options: sensor, induction loop, remote control, pull cords.
- Signal options: safety light, traffic light...
- Aluminium door guides in different colours.
- Monophasic Control Box 220 VAC - 50/60 Hz 424 €
- Battery or uninterrupted power supply system in case of power failure (requires 1x230vac-50/60hz voltage)
- Extension of manual release.
- ATEX Motor
- Canvas customisation (logos, pictures...)
- Kick plate on the bottom of the canvas to signal movement (black and yellow)

Improving **your** access



ABH DOCK SOLUTIONS is specialized in the design and manufacture of solutions to improving the flow of goods inside the warehouse or shops, as well as the optimization of external access.



HIGH ADDED
VALUE



COMMITMENT



EASY FITTING
& LOW
MAINTENANCE



QUALITY & I+D



FLEXIBILITY

Our products are focused to satisfy installers and end customers' needs: improve the cold chain, save energy, reduce operating costs and ensure the maximum efficiency of the facilities, in order they are 100% working.